



East Lyme High School Profile 2024-2025

30 Chesterfield Road
East Lyme, CT 06333

Phone: (860) 739-6946
Fax: (860) 691-4623

CEEB # 070177
www.eastlymeschools.org

Mission

The East Lyme High School experience prepares students academically, emotionally, and socially to be positive forces in the world and to live responsible, purposeful, and healthy lives.

The School

East Lyme High School is a four-year comprehensive public high school offering curricular and co-curricular programs to 894 students in grades nine-twelve. Accredited through the New England Association of Schools and Colleges, the school offers an extensive range of courses in college and career preparation. East Lyme High School employs six school counselors and 110 faculty.

The Community

East Lyme High School rests in a residential community of 18,645 with its students residing in the towns of East Lyme, Niantic and Salem. Located in New London County along the shoreline, the school is equidistant from New Haven and Providence, RI and is easily accessible via Interstate 95.

Pathways

The goals of the Pathways Programs at ELHS are to advance student learning with community-based experiences, increase capacity in the Career and Technical Education programming, and support students in their post-secondary learning and career choices.

School Counselors

- Elizabeth Maiese, A-Co**
elizabeth.maiese@elpsk12.org
- David Willis, Cu-Gi**
david.willis@elpsk12.org
- Jaclyn Sullivan, Gj-Le**
jaclyn.sullivan@elpsk12.org
- Christy Bryant, Li-M**
christy.bryant@elpsk12.org
- Lisa Belisle, N-R, CIL**
lisa.belisle@elpsk12.org
- Nadine Barnes, S-Z**
nadine.barnes@elpsk12.org

Ms. Deb Roselli Kelly
Principal- 2024

Mr. Jeffrey Newton
Superintendent

Mr. Henry Kydd
Principal- 2025

Counseling Office x-5580

Registrar-x-5512

School Highlights

- 2024 Connecticut National Science Bowl Competition Winner
- Second place in National Marching Band Competition
- Bronze Award Math Olympian
- Ten Drama Award Nominations and two award winners
- Ranked #2 2024 Niche Best College Prep Public Schools in New London County
- Ranked 3rd in 2023 US News and World Reports Norwich, CT Metro Area High Schools
- Three 2024 graduates employed at Electric Boat

Graduation Requirements and Career Concentrations

Credit Requirements

English.....	4.0
Social Studies...	3.5
Math.....	3.0
Science.....	3.0
Language.....	2.0
PE/Health.....	2.0
Fine Arts.....	1.0
Vocational Ed....	1.0
Electives.....	4.0
Mastery Experience...	1.0

Course Levels

AP- Advanced Placement
 H - Honors
 *ADV CCP – Advanced College and Career Preparatory
 *CCP - College and Career Preparatory
 *formerly named A and B level
 Additional information can be found in our Program of Studies on the ELHS website.

Career Concentrations

- Allied Health
- Broadcasting
- Business
- Computer Science
- Education
- Hospitality
- International Studies
- Manufacturing
- Performing Arts
- Print/Digital Communications
- Public Safety
- STEM
- Visual Arts
- World Languages and Cultures

25 Total Credits to Graduate

AP Classes Offered

Biology, Calculus AB, Calculus BC, Chemistry, Computer Science, Environmental Science, Government, Language & Composition, Literature & Composition, Mobile Computer Science, Music Theory, Physics 1 & 2, Psychology, Research, Seminar, Statistics, Studio Art, US History, World History

UConn ECE Courses Offered

Applied Mechanics, Calculus BC, EMT Training, English 12 1004, English 12 1007, French V, German IV, Human Development, Medical Terminology, Physics 1 & 2, Public Speaking, Spanish V

Honors Classes Offered

Algebra II, Anatomy/Physiology, Astronomy, Band, Biology, Catering and Hospitality, Chemistry, Concert Choir, Digital Film, Digital Journalism, English 10, Foundations of Calculus, French, Geometry, German, Graphics, Human Development, Journalism, Orchestra, Pre-Calculus, Spanish

College Partnerships and Special Programs

University of Connecticut Early College Experience (ECE)- allows motivated students to take UCONN courses at their high schools for both high school and college credit.

New London Scholars Program- allows students to take entry level college courses on the Connecticut College campus.

High School Partnership (HSP)- allows students to take entry level college courses on the Three Rivers Community College campus.

Independent Study- allows the student the opportunity to study a subject beyond what is available within the present curriculum. The student will design a plan, timeline and curriculum with an overseeing teacher who will assess them on a pass/fail basis.

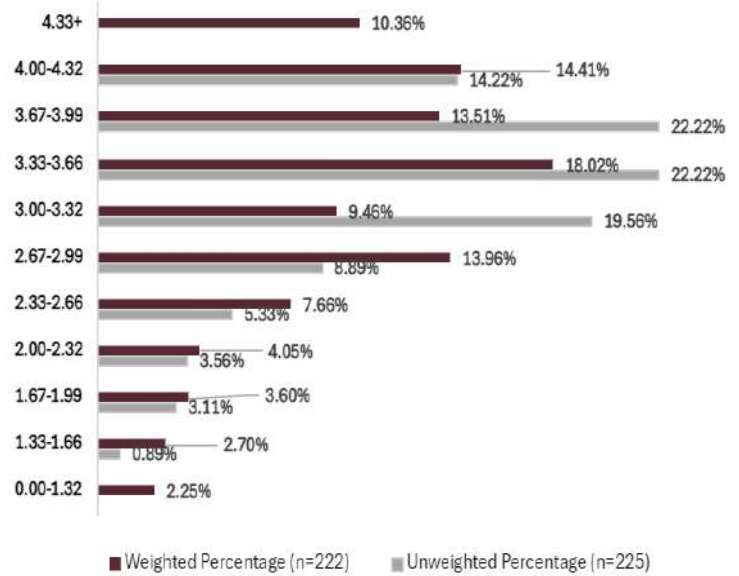
Interpreting the Academic Record

Grading System

		Cumulative GPA	Weighted GPA			
			AP/ ECE (x1.15)	Honors (x1.1)	ADV CCP (x1.05)	CCP (x1.0)
A+	97-100	4.33	4.98	4.76	4.55	4.33
A	93-96	4.0	4.6	4.4	4.2	4.0
A-	90-92	3.67	4.22	4.04	3.85	3.67
B+	87-89	3.33	3.83	3.66	3.50	3.33
B	83-86	3.00	3.45	3.30	3.15	3.00
B-	80-82	2.67	3.07	2.94	2.80	2.67
C+	77-79	2.33	2.68	2.56	2.45	2.33
C	73-76	2.00	2.30	2.20	2.10	2.00
C-	70-72	1.67	1.92	1.84	1.75	1.67
D+	67-69	1.33	1.53	1.46	1.40	1.33
D	63-66	1.0	1.15	1.1	1.05	1.0
D-	60-62	0.67	0.77	0.74	0.70	0.67
F	Below 60	0.0	0.0	0.0	0.0	0.0
WF		0.0	0.0	0.0	0.0	0.0

Both an unweighted and weighted GPA are calculated for each student after the first six semesters and after each subsequent semester. The unweighted, cumulative GPA is a simple average of all courses on a 4.0 scale. The weighted GPA is based on grades earned in leveled classes only.

GPA Distribution – Class of 2025 (June 2024)



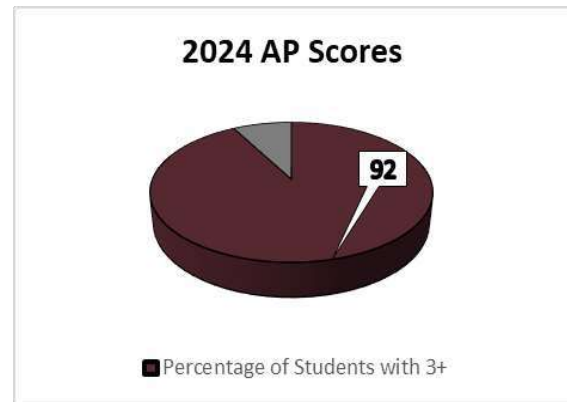
East Lyme High School publishes both an unweighted and weighted GPA and does not calculate class rank. The above graphic represents individual students' overall level of academic performance in relation to their class. Students who transfer into the school receive a weighted GPA after completing four semesters.

School Accomplishments and 2024 AP Test Data

Class of:	2024	2023	2022	2021	2020
Four-year Colleges	70%	75%	71%	70%	85%*
Two-year colleges	14%	14%	15%	12%	9%*
NMSQT semi-finalists/finalists	4/4	2/2	3/1	4/4	2/2
SAT Reading Mean	555	577	596	573	591
SAT Math Mean	547	555	583	563	580

The Class of 2024 had one member matriculate to Ivy League Colleges, a member commit to a Military Academy and two members who enlisted in the military.

*Indicates COVID year and student self-reporting



Total AP Students	233
Number of Exams	487

Class of 2024 Attending Colleges

American University, Bentley University, Berklee College of Music, Biola University, Brandeis University, Bryant University, Carnegie Mellon University, Central Connecticut State University, Clemson University, Coastal Carolina University, Colgate University, College of Charleston, College of the Holy Cross, CT State Community College, Curry College, Eastern Connecticut State University, Elon University, Embry-Riddle University, Endicott College, Fairfield University, Fisher College, Florida International University, Hofstra University, Hudson Valley Community College, Indiana University, Johns Hopkins University, Johnson & Wales University, Keene State College, MIT, Merrimack College, Mount Holyoke College, New England Institute of Technology, New York University, Nichols College, North Carolina State University, Northeastern University, Norwich University, Penn State University, Post University, Plymouth State University, Providence College, Quinnipiac University, Rensselaer Polytechnic Institute, Rochester Institute of Technology, Roger Williams University, Rutgers University, Saint Mary's College, Sacred Heart University, Skidmore College, Smith College, Southern Methodist University, Springfield College, St. Joseph's University, Suffolk University, SUNY Oswego, Syracuse University, The New School, The University of Tampa, Trinity University, Tufts University, United States Coast Guard Academy, University at Buffalo, University of Central Florida, University of Chicago, University of Connecticut, University of Florida, University of Maryland, University of Massachusetts, University of Miami, University of Michigan, University of Mississippi, University of New England, University of New Hampshire, University of New Haven, University of North Carolina, University of Notre Dame, University of Pittsburgh, University of Rhode Island, University of Saint Joseph, University of Scranton, University of South Carolina, University of Toledo, University of Toronto, University of Vermont, University of Virginia, Vermont State University, Villanova University, Virginia Tech, , Western New England University, Westfield State University, Worcester Polytechnic Institute, Yale University