



East Lyme High School Profile

2023-2024

30 Chesterfield Road
East Lyme, CT 06333

Phone: (860) 739-6946
Fax: (860) 691-4623

CEEB # 070177
www.eastlymeschools.org

Mission

The East Lyme High School experience prepares students academically, emotionally, and socially to be positive forces in the world and to live responsible, purposeful, and healthy lives.

The School

East Lyme High School is a four-year comprehensive public high school offering curricular and co-curricular programs to 995 students in grades nine-twelve. Accredited through the New England Association of Schools and Colleges, the school offers an extensive range of courses in college and career preparation. East Lyme High School employs six school counselors and 110 faculty.

The Community

East Lyme High School rests in a residential community of 18,693 with its students residing in the towns of East Lyme, Niantic and Salem. Located in New London County along the shoreline, the school is equidistant from New Haven and Providence, RI and is easily accessible via Interstate 95.

Coastal Connections

Inspired by Big Picture Learning, Coastal Connections is an interest-based learning opportunity for ELHS students that incorporates classroom learning with internship placements. Courses are designated with CC on the transcript.

School Counselors

- Elizabeth Maiese**, A-Di
elizabeth.maiese@elpsk12.org
- Emily Cacace**, Do-Har
emily.cacace@elpsk12.org
- Jaclyn Sullivan**, Has- Le
jaclyn.sullivan@elpsk12.org
- Christy Bryant**, Li-Ra
christy.bryant@elpsk12.org
- Lisa Belisle**, Re-SI, CIL
lisa.belisle@elpsk12.org
- Nadine Barnes**, Sm-Z
nadine.barnes@elpsk12.org

Mr. Jeffrey Newton
Superintendent

Counseling Office x-5580

Ms. Deb Roselli Kelly
Principal

Registrar-x-5512

School Highlights

- 2023 Connecticut/Rhode Island National Science Bowl Competition Winner
- 2023 American Regional Math League National Competition Participant
- 2023 International Chemistry Olympiad Participant
- Ranked #1 2023 Niche Best High School for Athletes in New London County
- Ranked #2 2023 Niche Best College Prep Public Schools in New London County
- Ranked 3rd in 2023 US News and World Reports Norwich, CT Metro Area High Schools
- 2017 National Blue Ribbon School

Graduation Requirements and Career Concentrations

Credit Requirements

English.....	4.0
Social Studies...	3.5
Math.....	3.0
Science.....	3.0
Language.....	2.0
PE/Health.....	2.0
Fine Arts.....	1.0
Vocational Ed..	1.0
Electives.....	4.0
Mastery Experience...	1.0

Course Levels

- AP- Advanced Placement
- H - Honors
- A - Competitive College Preparatory
- B - College Preparatory

Career Concentrations

- Broadcasting
- Business
- Computer Science
- Education
- Hospitality
- International Studies
- Manufacturing
- Performing Arts
- Print/Digital Communications
- STEM
- Visual Arts

Additional information can be found in our Program of Studies on the ELHS website.

25 Total Credits to Graduate

AP Classes Offered

Biology, Calculus AB, Calculus BC, Chemistry, Computer Science, Environmental Science, Government, Language & Composition, Literature & Composition, Mobile Computer Science, Music Theory, Physics 1 & 2, Psychology, Seminar, Statistics, Studio Art, US History, World History

UConn ECE Courses Offered

Applied Mechanics, Calculus BC, EMT Training, English 12 1004, English 12 1007, French V, German IV, Human Development, Medical Terminology, Physics 1 & 2, Public Speaking, Spanish V

Honors Classes Offered

Algebra II, Anatomy/Physiology, Astronomy, Band, Biology, Catering and Hospitality, Chemistry, Concert Choir, Digital Film, Digital Journalism, English 10, Foundations of Calculus, French, Geometry, German, Graphics, Human Development, Journalism, Orchestra, Pre-Calculus, Spanish, String Ensemble, Studio Art, Trigonometry, WISE

College Partnerships and Special Programs

University of Connecticut Early College Experience (ECE)- allows motivated students to take UCONN courses at their high schools for both high school and college credit.

New London Scholars Program- allows students to take entry level college courses on the Connecticut College campus.

High School Partnership (HSP)- allows students to take entry level college courses on the Three Rivers Community College campus.

Independent Study- allows the student the opportunity to study a subject beyond what is available within the present curriculum. The student will design a plan, timeline and curriculum with an overseeing teacher who will assess them on a pass/fail basis.

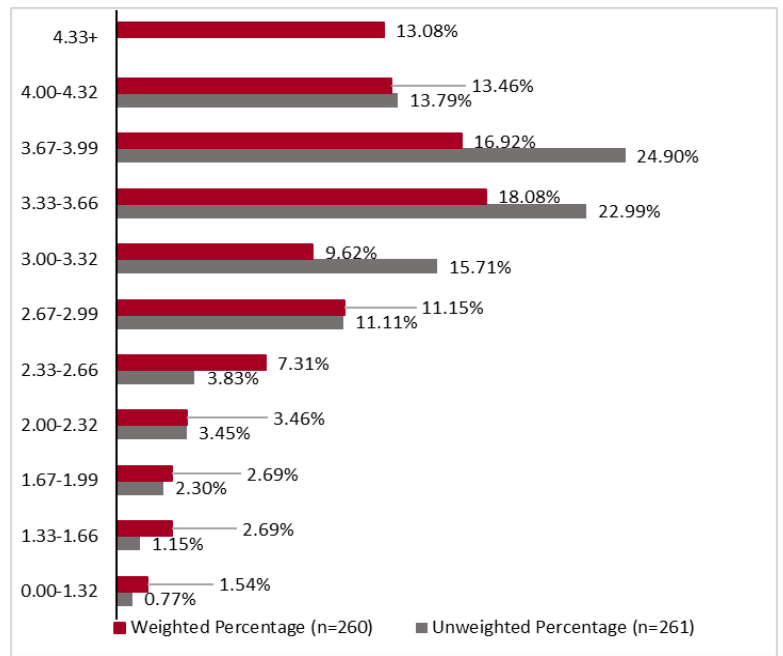
Interpreting the Academic Record

Grading System

		Cumulative GPA	Weighted GPA			
			AP/ECE (x1.15)	Honors (x1.1)	A-level (x1.05)	B/C-levels (x1.0)
A+	97-100	4.33	4.98	4.76	4.55	4.33
A	93-96	4.0	4.6	4.4	4.2	4.0
A-	90-92	3.67	4.22	4.04	3.85	3.67
B+	87-89	3.33	3.83	3.66	3.50	3.33
B	83-86	3.00	3.45	3.30	3.15	3.00
B-	80-82	2.67	3.07	2.94	2.80	2.67
C+	77-79	2.33	2.68	2.56	2.45	2.33
C	73-76	2.00	2.30	2.20	2.10	2.00
C-	70-72	1.67	1.92	1.84	1.75	1.67
D+	67-69	1.33	1.53	1.46	1.40	1.33
D	63-66	1.0	1.15	1.1	1.05	1.0
D-	60-62	0.67	0.77	0.74	0.70	0.67
F	Below 60	0.0	0.0	0.0	0.0	0.0
WF		0.0	0.0	0.0	0.0	0.0

Both an unweighted and weighted GPA are calculated for each student after the first six semesters and after each subsequent semester. The unweighted, cumulative GPA is a simple average of all courses on a 4.0 scale. The weighted GPA is based on grades earned in leveled classes only.

GPA Distribution – Class of 2024 (June 2023)



East Lyme High School publishes both an unweighted and weighted GPA and does not calculate class rank. The above graphic represents individual students' overall level of academic performance in relation to their class. Students who transfer into

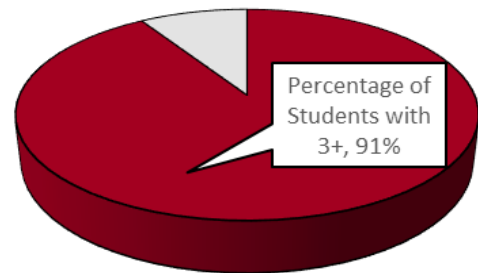
School Accomplishments and 2023 AP Test Data

Class of:	2023	2022	2021	2020	2019
Four-year Colleges	75%	71%	70%	85%*	75%
Two-year colleges	14%	15%	12%	9%*	10%
NMSQT semi-finalists/finalists	2/2	3/1	4/4	2/2	3/3
SAT Reading Mean	577	596	573	591	560
SAT Math Mean	555	583	563	580	547

The Class of 2023 had, five members matriculate to Ivy League Colleges, a member commit to a Military Academies and two members who enlisted in the military.

*Indicates COVID year and student self-reporting

2023 AP Scores



Total AP Students	263
Number of Exams	564

Class of 2023 Attending Colleges

American University, Boston University, Brown University, Bryant University, Carnegie Mellon University, Central Connecticut State University, Clemson University, Colby College, Columbia University, Connecticut College, Cornell University, Dartmouth College, Davidson College, Dean College, Eastern Connecticut State University, Endicott College, Fairfield University, Fitchburg State University, Florida Atlantic University, Fordham University, Gateway Community College, George Mason University, Georgetown University, Gettysburg College, Hampden-Sydney College, Harding University, Hartwick College, Hood College, Ithaca College, James Madison University, John Cabot University, Johnson & Wales University, Kansas City Art Institute, Loyola University, Maine Maritime Academy, Marist College, Michigan State University, Middlesex Community College, Mitchell College, New England Institute of Technology, New York University, Nichols College, North Carolina State University, Northern Arizona University, Northwestern University, Norwich University, Pace University, Plymouth State University, Porter and Chester, Providence College, Purdue University, Quinnipiac University, Rensselaer Polytechnic Institute, Rhode Island College, Roger Williams University, Rutgers University, Sacred Heart University, Saint Michael's College, Salve Regina University, Simmons University, Smith College, Southern Connecticut State University, Spelman College, Springfield College, Suffolk University, Syracuse University, The University of Alabama, The University of Tampa, Three Rivers Community College, Trinity University, Ulster County Community College, Union College, United States Coast Guard Academy, Università Ca Foscari Venezia, University at Buffalo, University of California-Santa Barbara, University of Central Florida, University of Connecticut, University of Hartford, University of Massachusetts, University of Michigan, University of New England, University of New Hampshire, University of New Haven, University of North Carolina, University of Rhode Island, University of Saint Joseph, University of South Carolina, University of Toronto, Vermont State University, Villanova University, Virginia Tech, Wagner College, Wesleyan University, Western New England University, Wheaton College, Worcester Polytechnic Institute